

Ethernet Reader ER750/ER755

Quick Start

Connect Reader to the Ethernet Network

Step 1

Connect an ER750/ER755 reader to the Ethernet hub via Ethernet cable.

Note:

Or you can connect an ER750/ER755 reader to your PC or Laptop directly with the same cable.

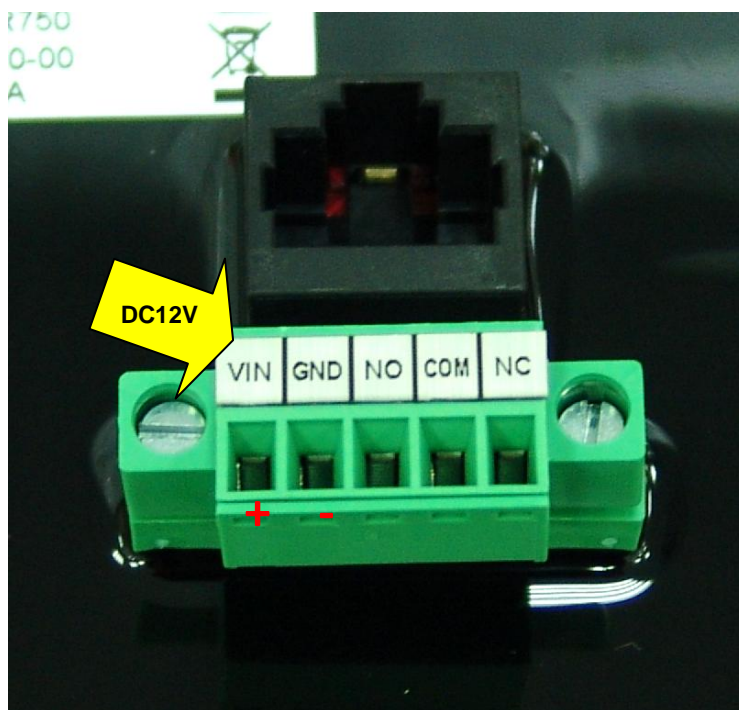


Step 2

Connect power **DC12V** to the pin VCC and GND.

Note:

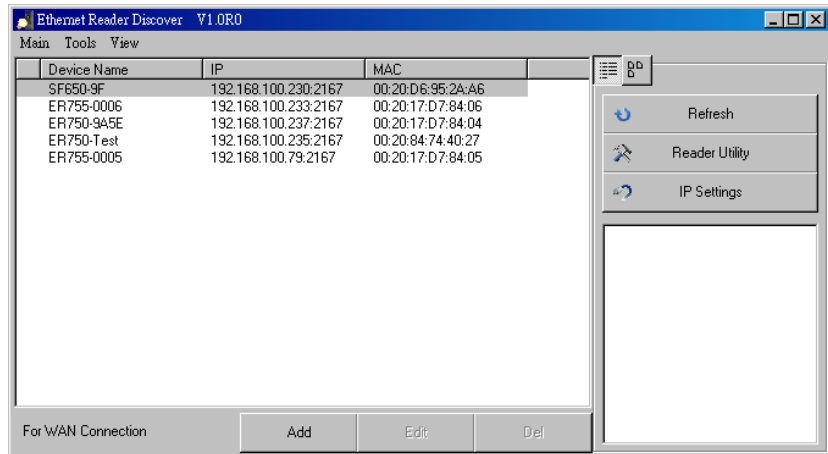
Or you can connect an ER750-10/ER755-10 reader to your P.O.E HUB



Step 3

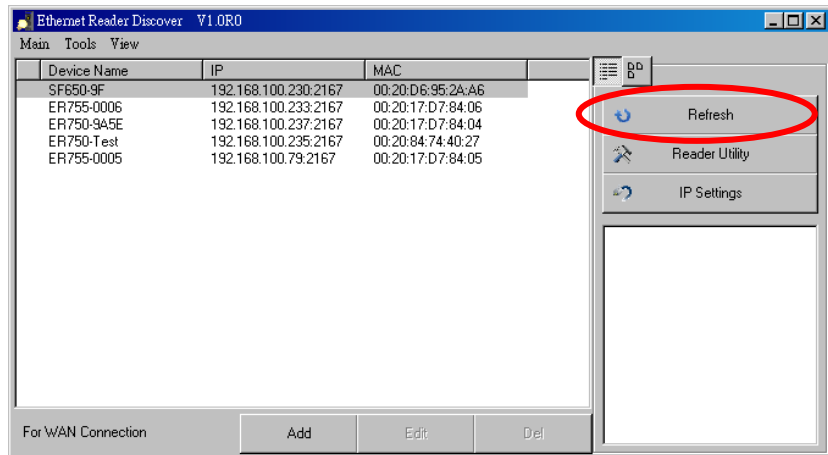
Use “EthernetReaderDiscover” utility to search all available Ethernet devices on network.

(This utility can be found in the installation CD “disk5453”).



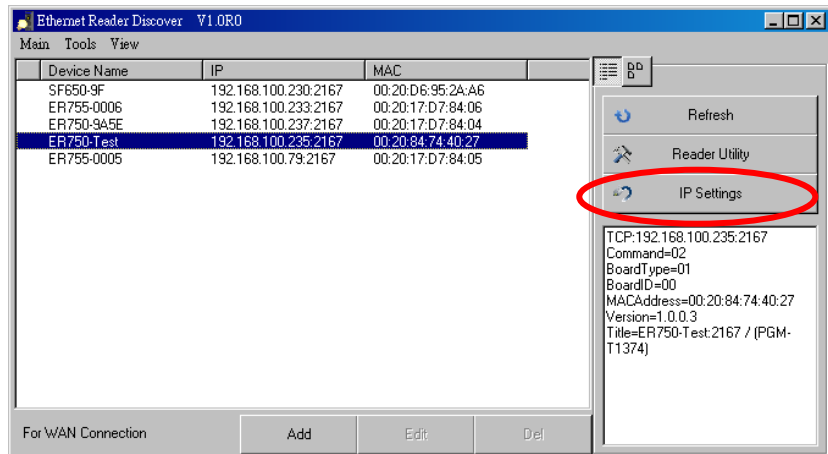
Step 4.

Click “Refresh” to refresh the Ethernet reader list.



Step 5. (Optional)

Click “IP Settings” to change the new device name.



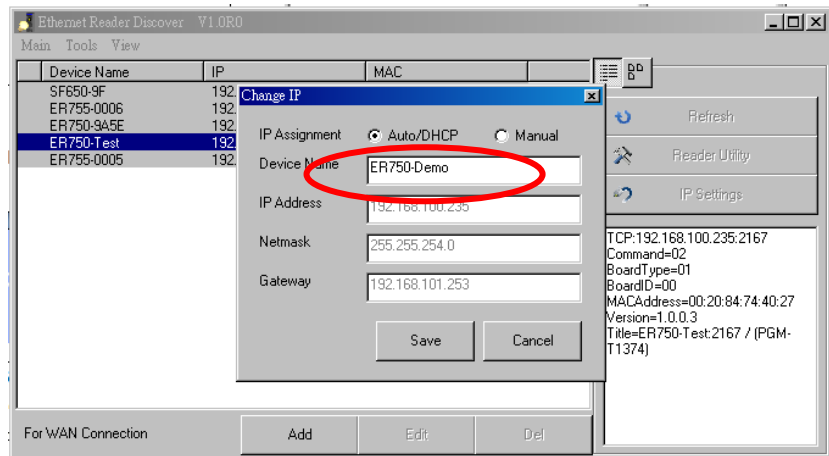
Step 6. (Optional)

Edit the ER750/ER755 device name for easy recognition.

Click "Save" to update settings.

NOTICE:

If you have to manually set IP address, you can click "Manual" and then setup IP address of the device.

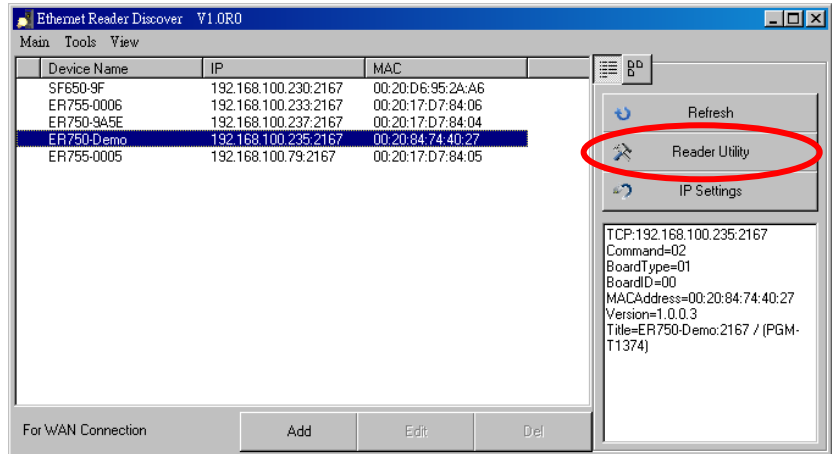


Configure ER750/ER755 Reader Settings

Step 1

Use “Ethernet Reader Discover” utility to search all available Ethernet devices on network.

Then select a device you want to configure the reader functions and click “Reader Utility”



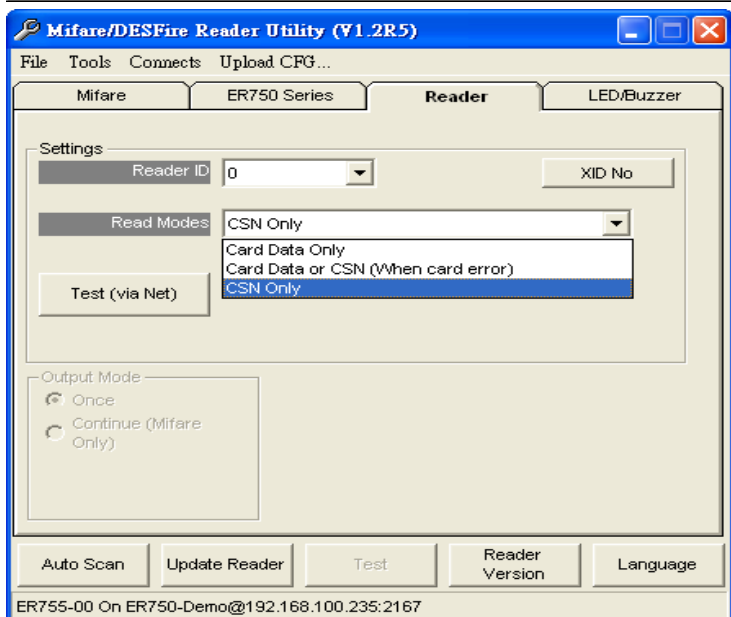
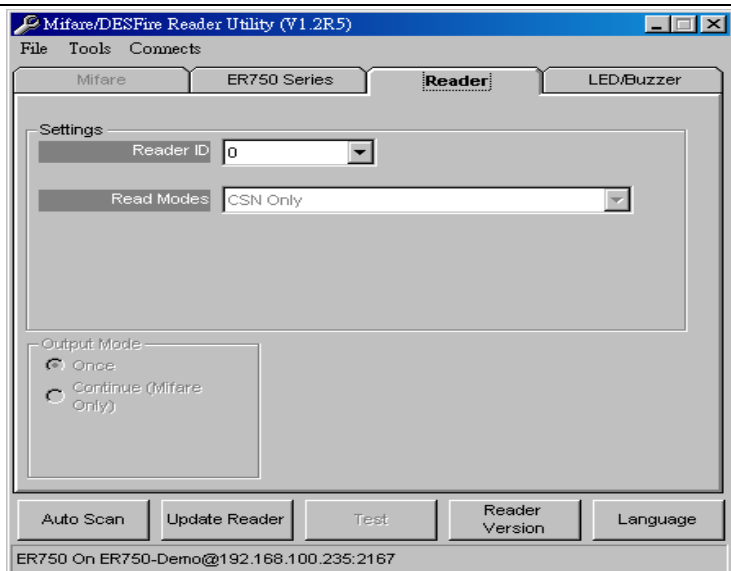
Step 2

The “Ethernet Reader Discover” utility will execute the “Mifare/DESfire Reader Utility” and connect to the selected ER750/ER755 reader.

Remark:

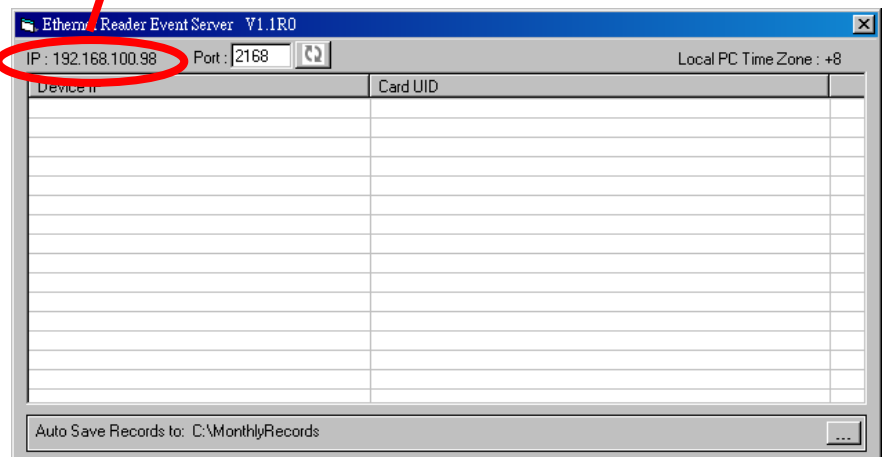
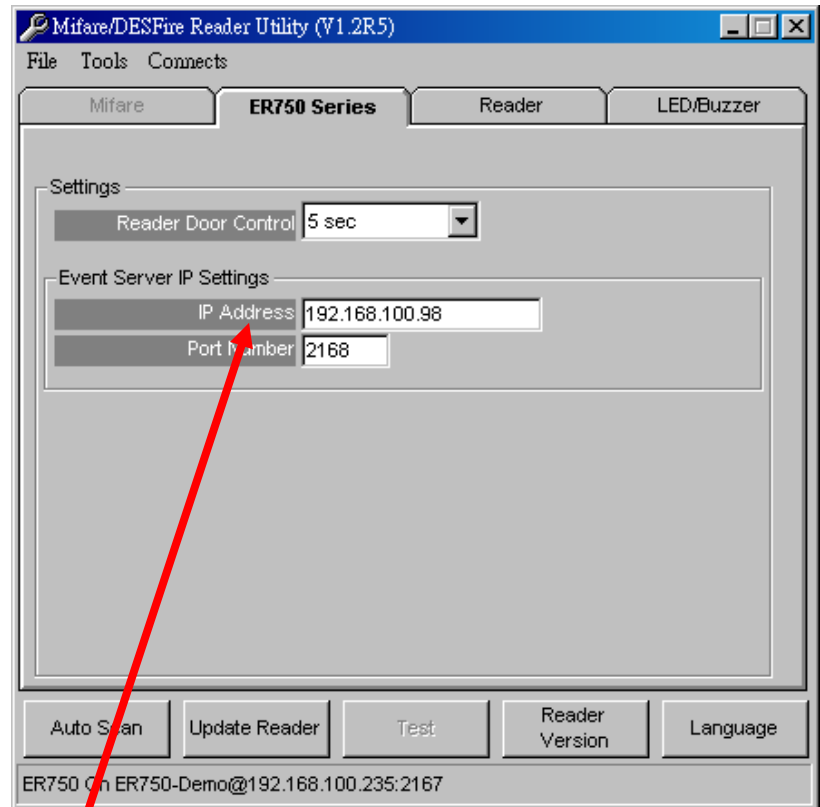
For ER750, the “Read Mode” is “CSN Only”.

For ER755, the “Read Mode” can select Card Data only · Card Data or CSN or CSN only.



Step 3

Then setup device settings and IP settings.

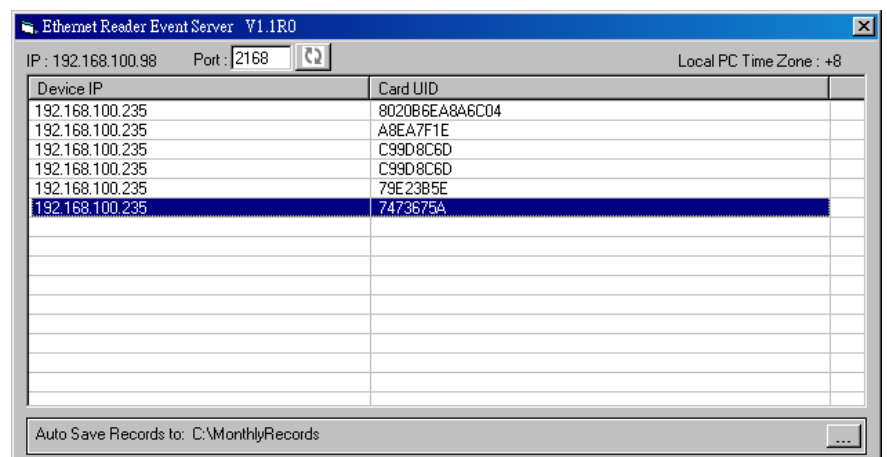


Step 4

Begin to receive the card UID event from ER750.

Begin to receive the card sector event from ER755.

We open the Event Server source code in VB language, and hope that can help you easily to integrate Event Server into your system



How to change PC/Laptop network setting to support the Auto IP mode

Step 1

Most of the PC/Laptop network default setting is “Obtain an IP address automatically” (auto IP mode). If not, you can follow the steps to change the network setting to auto IP mode.

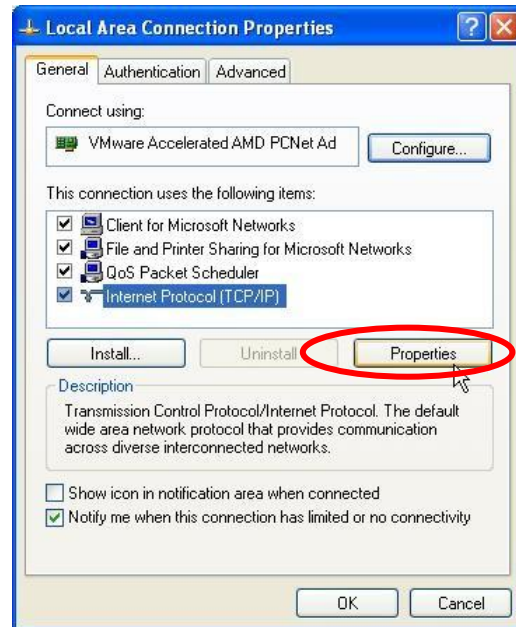
Go to:

Control Panel > Network and Internet Connections > Local Area Connection Properties



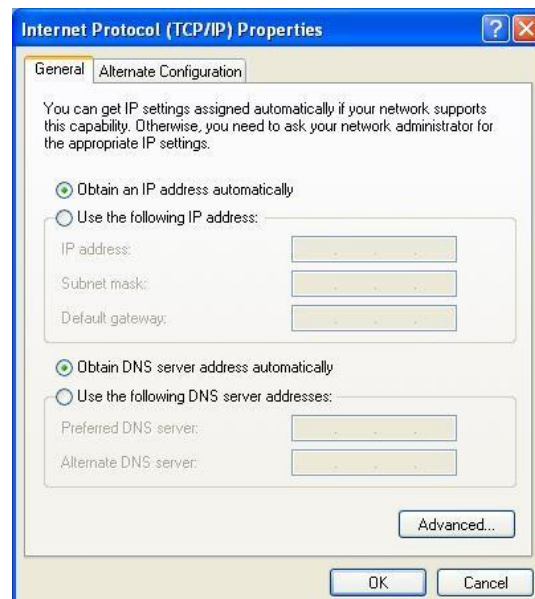
Step 2

General select Internet Protocol (TCP/IP) and click Properties.



Step 3

Select the “Obtain an IP address automatically”. Then click “OK”.

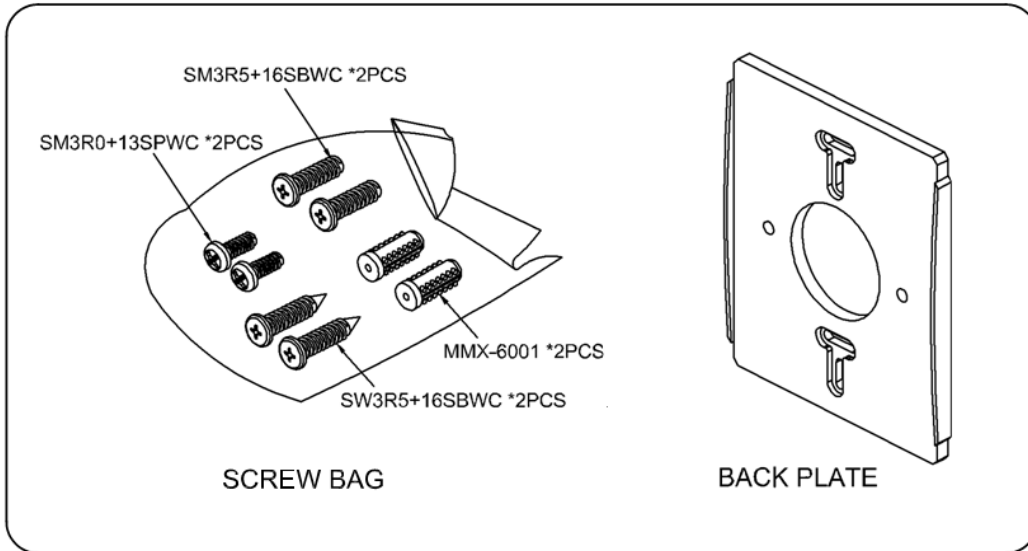


Step 4

Connect the ER750/ER755 reader to PC/Laptop via Ethernet cable then power on the ER750/ER755 reader.

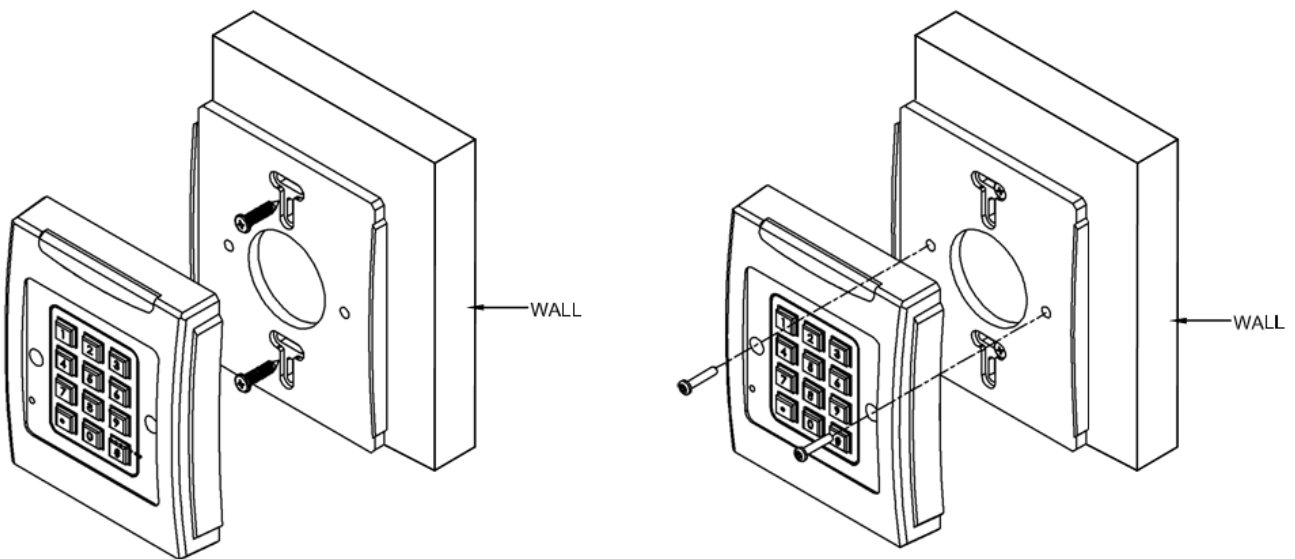


Required Items



Back Plate Installation

1. Fix the back plate onto the wall with screw#M3.5 ◦
2. Assemble the Housing with screw#M3 ◦



The above housing is reference only

**CAUTION:**

The crossed out wheeled bin label that can be found on your product indicates that this product should not be disposed of via the normal household waste stream.

To prevent possible harm to the environment or human health please separate this product from other waste streams to en-sure that it can be recycled in an environmentally sound manner.

For more details on available collection facilities please contact your local government office or the retailer where you purchased this product.

This information only applies to customers in the European Union.

For other countries, please contact your local government to investigate the possibility of recycling your product.

PROMAG®

GIGA-TMS INC.

<http://www.gigatms.com.tw>

<mailto:promag@gigatms.com.tw>

TEL : +886-2-26954214

FAX : +886-2-26954213

Office: 8F, No. 31, Lane 169, Kang-Ning St., Hsi-Chih, Taipei, Taiwan